

**“Scientific Conference on Karakoram Resources and Climate Change: Glacier, Water
and Ecosystem”**
Islamabad, 10 September 10 2013
Franco Mari & Maurizio Gallo

SOME CONSIDERATIONS ABOUT THE DEVELOPMENT OF CKNP MANAGEMENT PLAN



Pakistan



Gilgit - Baltistan

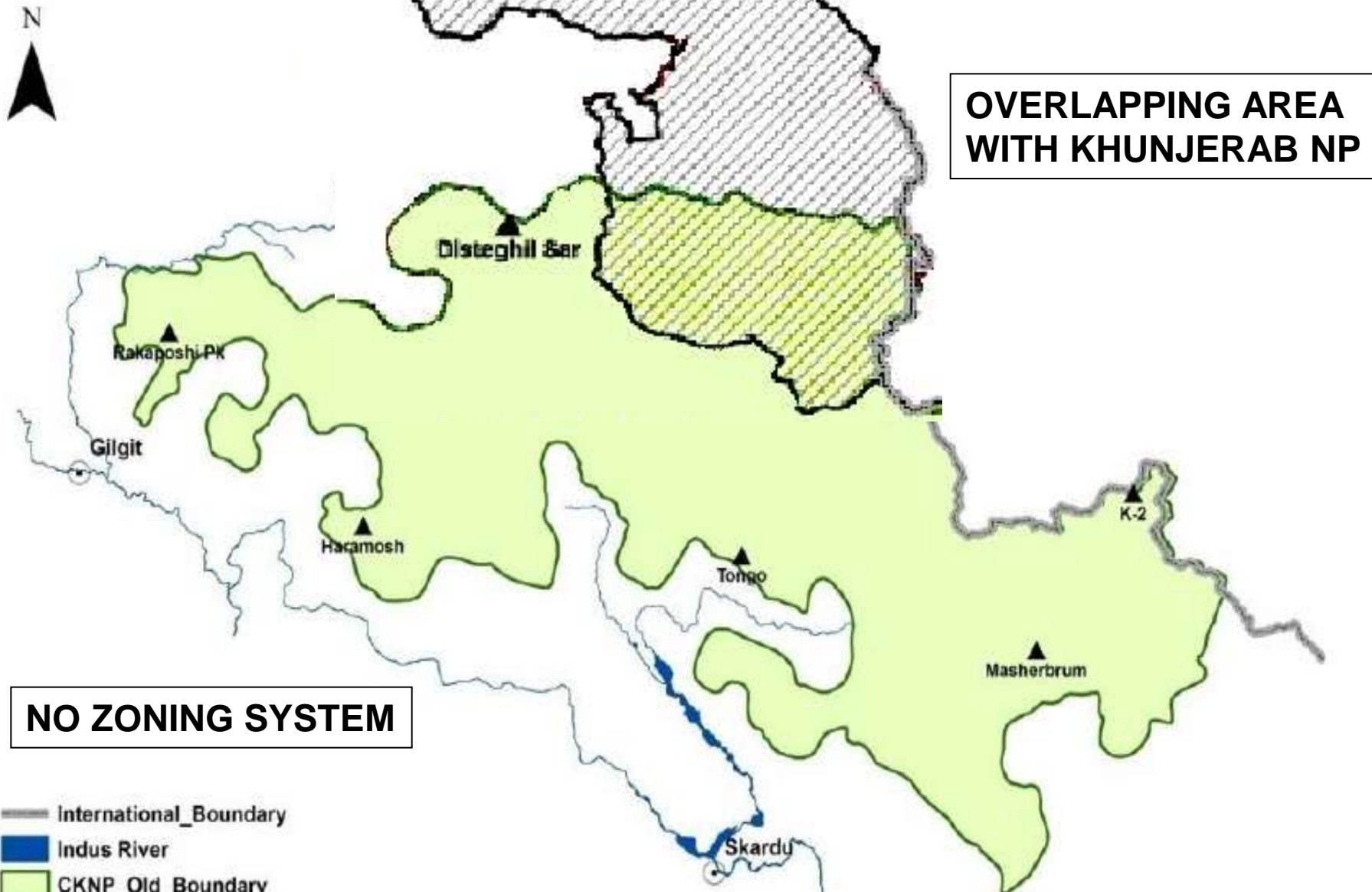


Italy



*Ambasciata d'Italia
Islamabad*

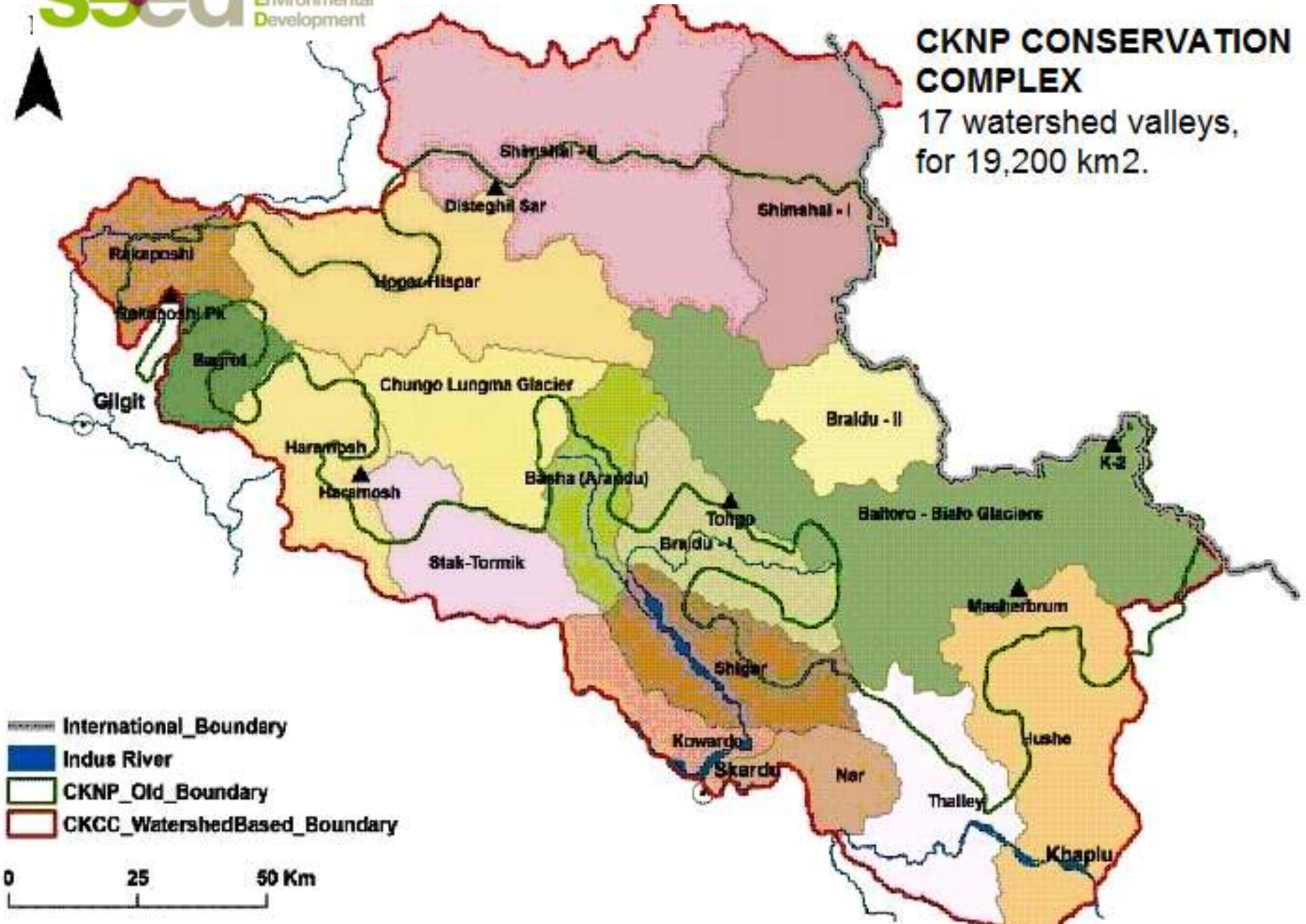
GAPS



CKNP MANAGEMENT PLAN

CKNP CONSERVATION COMPLEX

17 watershed valleys,
for 19,200 km².



**1. DEVELOPMENT OF THE PARK BOUNDARIES AND ZONING SYSTEM
AND ITS SHARING AND IMPLEMENTATION WITH LOCAL COMMUNITIES**

**2. MOVE FROM GENERAL APPROACH TO A VALLEY LEVEL WITH
PARTICULAR REGARDS TO NATURAL RESOURCES USE**

1. RELIABLE BASICAL DATA FOR DELINEATION OF PARK AND ZONIG SYSTEM

- Digital Elevation Model
- Land Cover Map
- Glacier Cadastre
- Catchments Division Areas
- Geological Map
- Landslide Susceptibility Map
- Wildlife Distribution (ungulates and carnivores, was chosen as “umbrella species”)

2. USE OF A “PARTECIPATORY APPROACH”

CONSERVATIONIST APPROACH

Consider the necessity to preserve the pristine wilderness managing the Protected Areas as “islands” by not allowing any extraction of resources.

PARTECIPATORY APPROACH

Park fulfils not only a function of conservation but also considers the necessities of local communities, and this especially for the high mountain areas where they live in a critical situation.

3. DELINEATE A MANAGEMENT PLAN AS SIMPLE AS POSSIBLE SO THAT IT COULD BE IMMEDIATELY PRACTICABLE IN ALL THE DIFFERENT CONTEXTS OF THE CKNP SITUATIONS.

DELINEATION OF BOUNDARIES and ZONING SYSTEM

- Villages
- Main roads
- Main mining areas
- Main agricultural areas near the villages

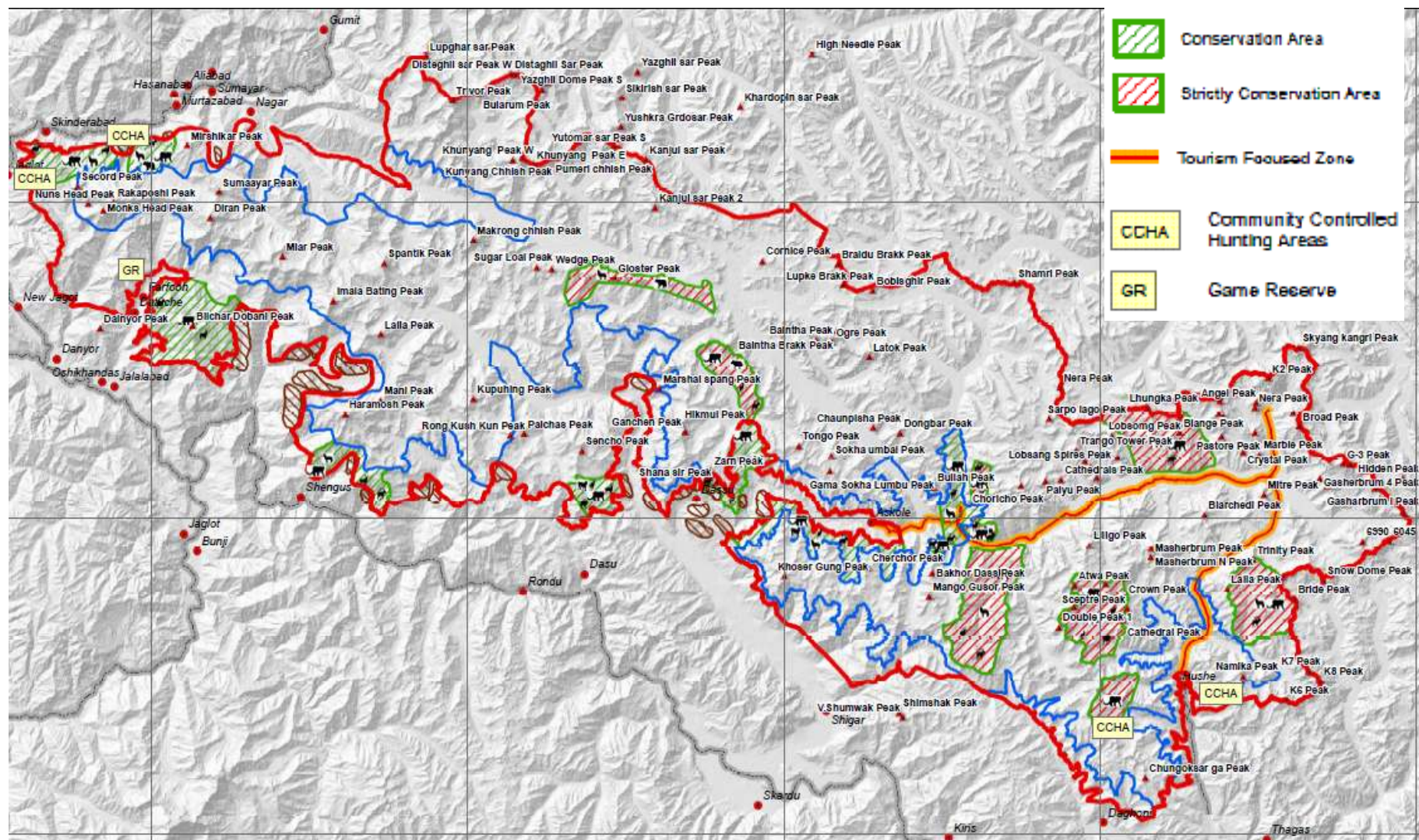
CKNP ZONING SYSTEM

Legend

- CKNP Border
- CKNP Core Zone
- Mining Area

Protected Areas

- Conservation Area
- Strictly Conservation Area
- Tourism Focused Zone
- CCHA Community Controlled Hunting Areas
- GR Game Reserve



SUMMARY of the MANAGEMENT INDICATIONS

Summary of the management indication in the CKNP zone system	Local communities and Gilgit-Baltistan people admittance (no fees) ▲	Pakistani and foreigners visitors admittance ▲	Local communities livestock grazing ▲	Presence of pack animals ▲	Presence of dogs	Hunting ▲	Game bird hunting	Fishing	Firewood collection ▲	Timber extraction ▲	Collection of medicinal herbs & not timber forest products ▲	
Buffer Zone	✓	✓	✓	✓	×	×	×	×	✓	✓	✓	
Conservation Area	✓	✓	✓•	✓•	×	×	×	×	✓	✓	✓	
Community Controlled Hunting Area	✓	✓	✓•	✓•	×	✓	×	×	✓	✓	✓	
Core Zone	✓	×	✓••	×	×	×	×	×	×	×	×	
Tourism Focus Area	✓	✓	×	✓	×	×	×	×	×	×	×	
Low Frequency Tourism Area	✓	✓	×	×	×	×	×	×	×	×	×	
Occasional Tourism Area	✓	✓	×	×	×	×	×	×	×	×	×	
Strictly Conservation Area	×	×	×	×	×	×	×	×	×	×	×	

▲ following the specific management indication

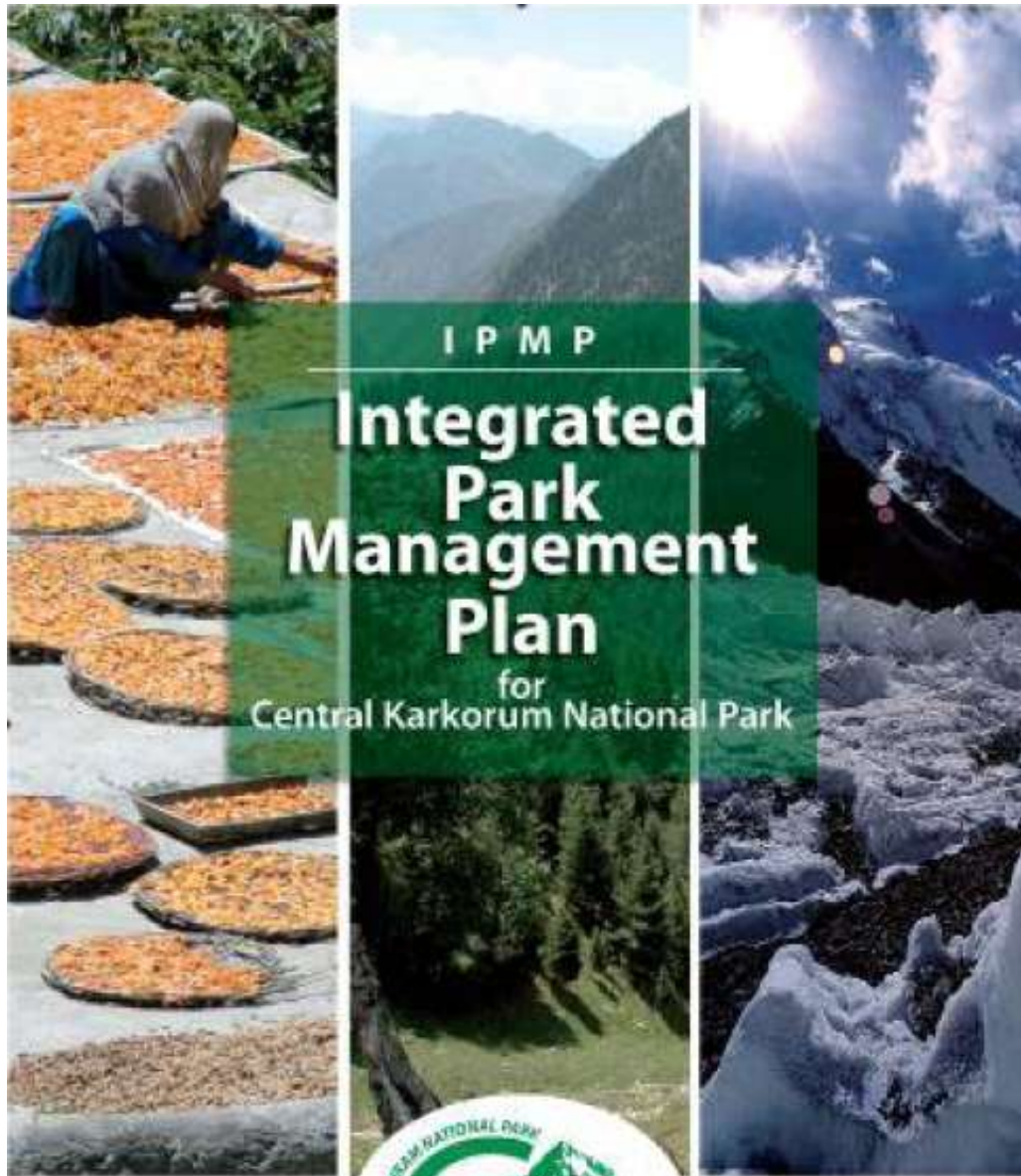
* only with entrance permission released by the CKNP Directorate

• in this area the veterinary and vaccination program for livestock has high priority

•• accepted only free roaming yak, cow and crossbreed. A specific program for the presence of these animals has to be developed with the local communities.

■ allowed only in Trango area.

March 2013



PROCESS of SHARING and IMPLEMENTATION with COMMUNITIES of the CKNP MAGAMENT PLAN *March / July 2013*



OBJECTIVES

- ☐to share the new development in the Management Plan of CKNP;
- ☐to get feedbacks and suggestions from the community representatives;
- ☐to take demands from the communities in order to provide the incentives;
- ☐to share the idea of establishing a CKNP Community Management Committee (CMC);
- ☐participatory process in order to reach the goal of economic development while protecting environment.

DISCUSSION AND DEBATE TOPICS

- 1. General information at village level**
- 2. CKNP borders verification**
- 3. Use of wood resource: cognitive investigation on the use of the forestry resources**
- 4. Use of the pasture resource**
- 5. Mining activity**
- 6. Wildlife**
- 7. Fodder**
- 8. Water supply schemes (irrigation and drinking water)**
- 9. Tourism opportunities and economy**
- 10. Land use / Use rights inside the park**
- 11. Domestic health management**
- 12. Incentives**

CKNP VALLEYS AND VILLAGES

15 Valleys

Hushey
Thalley
Dhagoni
Shigar
Lower Braldo
Upper Braldo
Basha
Baghicha /Tormik
Astak /Shengus
Haramosh
Bagrote
Ghulmat
Miachar
Nagar
Danyore/Jutal/Juglot



150 villages



100%

Involved in community level
meetings

Households:

19.688

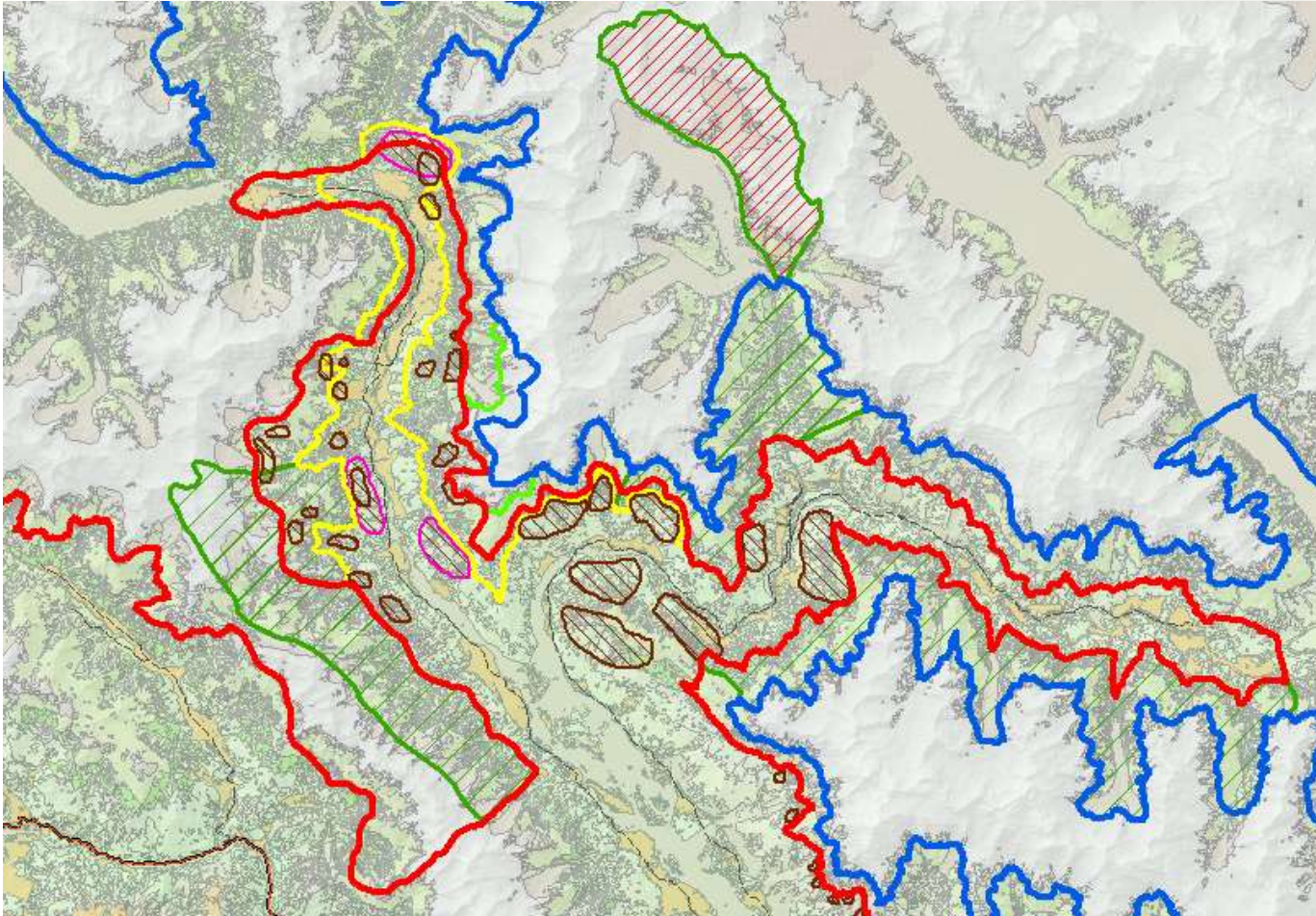
Populations:

151.047

72%

Involved in Community level meetings

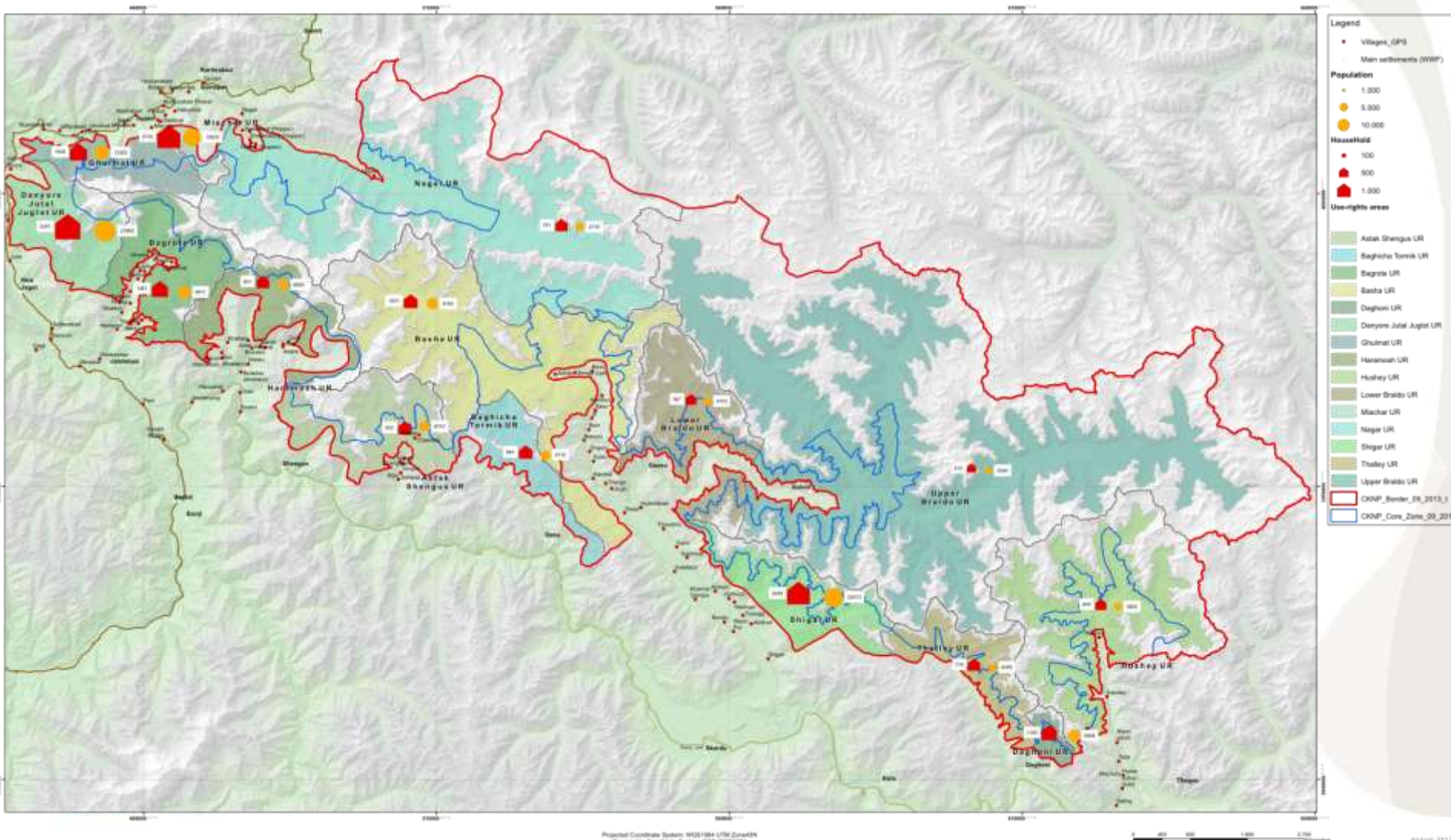
CKNP BORDERS



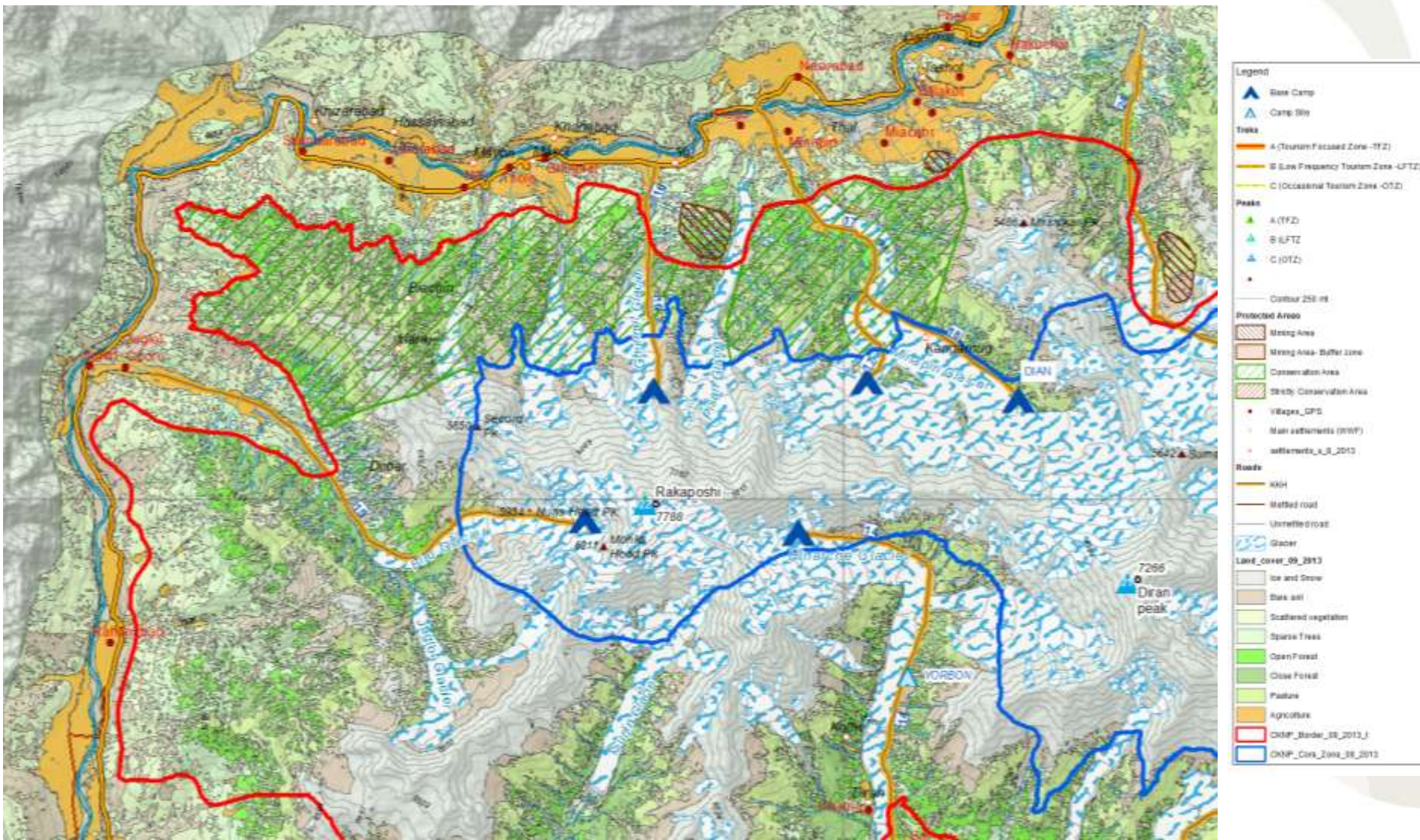
In red and blue: the agreed borders with the communities
In yellow and green: the proposed border
In pink: mining areas changed/deleted

CKNP USE-RIGHTS MAPS

Central Karakoram National Park Use-rights map



CKNP TOURISM MAP LAND COVER



PROBLEMS ARISED

- ☐ Lack of communication between CKNP Directorate and local communities
- ☐ Statutory laws / customary laws: should be compatible with environmental conservation and park sustainability and should be homogenized among valleys
- ☐ Implementation of incentive policies : necessity of further clarifications and discussions
- ☐ Importance of awareness and capacity building on new strategies for natural resources conservation
- ☐ Necessity of large amount of funds for infrastructural projects

Target	Threat	Environmental Impact	SEED Pilot program
► LIVESTOCK	<ul style="list-style-type: none"> - Diseases - Malnutrition - Low productivity - Predation 	<ul style="list-style-type: none"> - Diseases to wildlife - Predators over-killing 	<ul style="list-style-type: none"> - Insurance with veterinary treatment - Good practices
► PASTURE	<ul style="list-style-type: none"> - Few production in low pastures 	<ul style="list-style-type: none"> - Overgrazing 	<ul style="list-style-type: none"> - Water channels improvement
► FODDER	<ul style="list-style-type: none"> - Few production for winter time - Storage techniques 	<ul style="list-style-type: none"> - Overgrazing 	<ul style="list-style-type: none"> - Increase of productivity - New storage techniques
► WOOD	<ul style="list-style-type: none"> - Low productivity 	<ul style="list-style-type: none"> - Over-logging - Illegal cutting (trees) - Deforestation 	<ul style="list-style-type: none"> - Increase plantations - Social forestry new rules - New high efficiency stoves

► **TROPHY HUNTING:** more conservative rules

► **TOURISM:** promotion, regulation and definition of new system of fees

Thank You!

