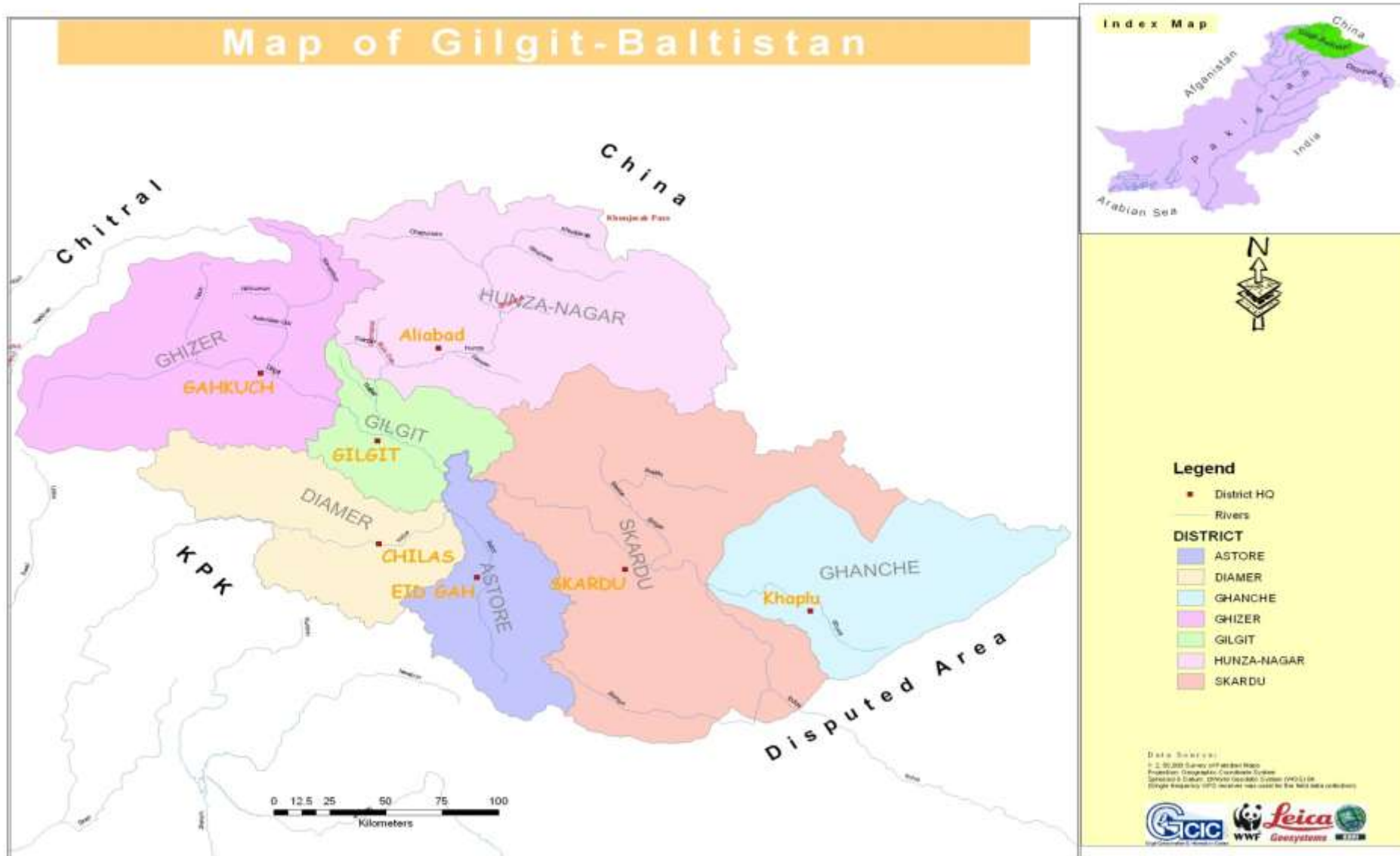




# POTENTIAL BIOSPHERE RESERVES IN GILGIT- BALTISTAN

**WALAYAT NOOR**  
**Conservator Parks & Wildlife**  
**Gilgit- Baltistan**

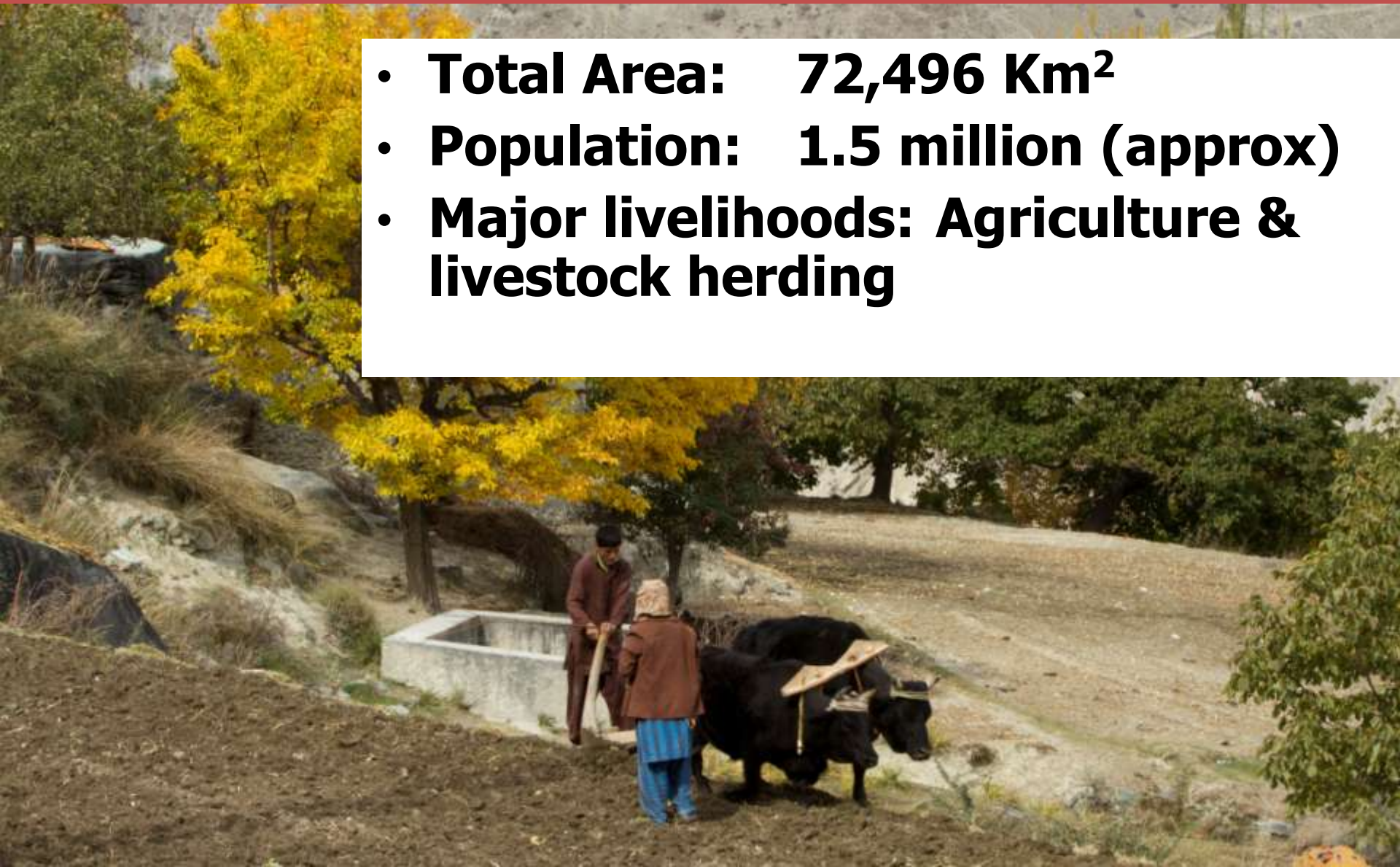
# MAP AND LOCATION OF Gilgit-Baltistan



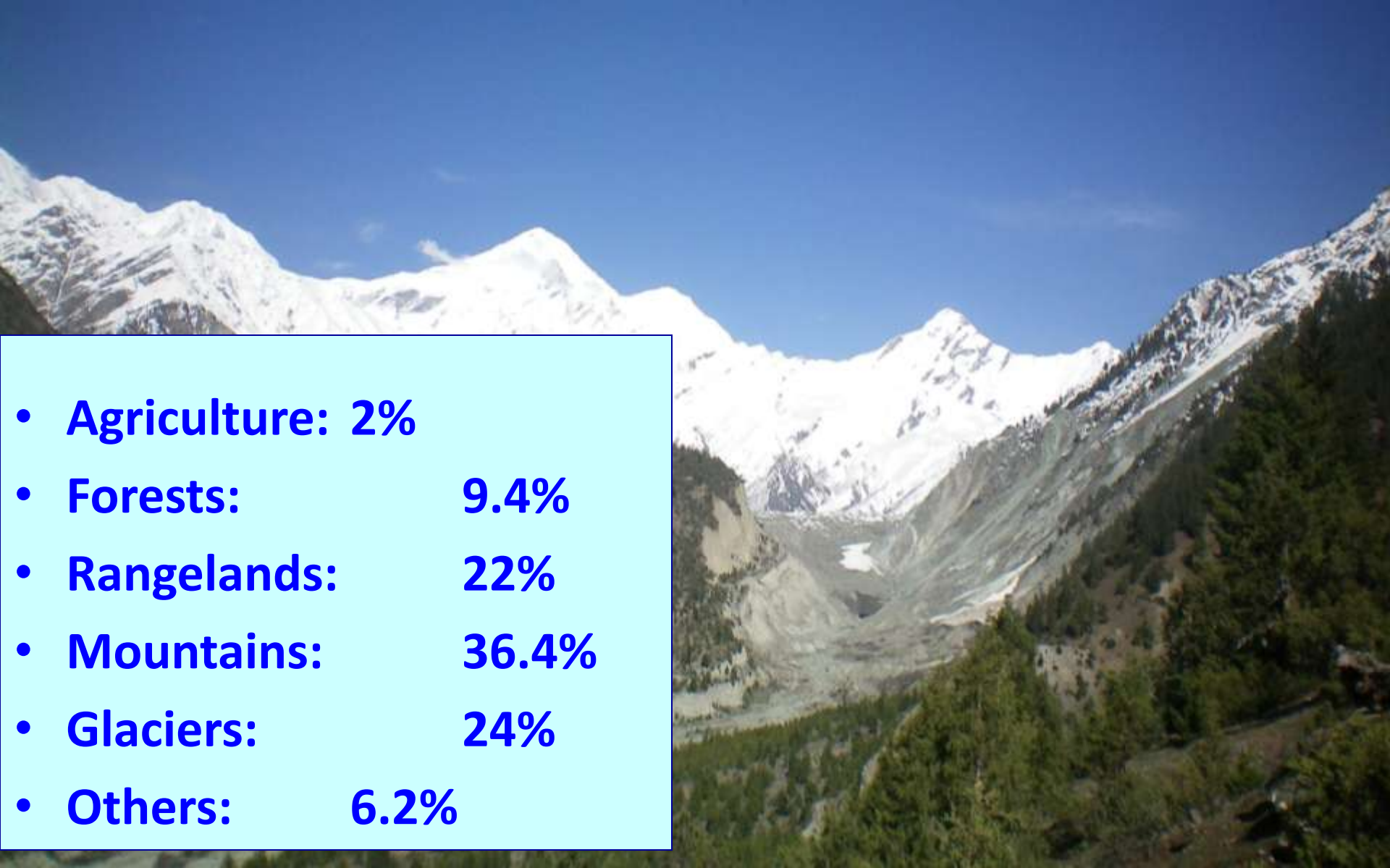


# Demographic and Socio-Economic Profile

- **Total Area: 72,496 Km<sup>2</sup>**
- **Population: 1.5 million (approx)**
- **Major livelihoods: Agriculture & livestock herding**



# Major land-uses

- 
- **Agriculture: 2%**
  - **Forests: 9.4%**
  - **Rangelands: 22%**
  - **Mountains: 36.4%**
  - **Glaciers: 24%**
  - **Others: 6.2%**

**Total Area of Gilgit-Baltistan...72496 Sq Km**

**Total Protected Area .....33999 Sq Km**

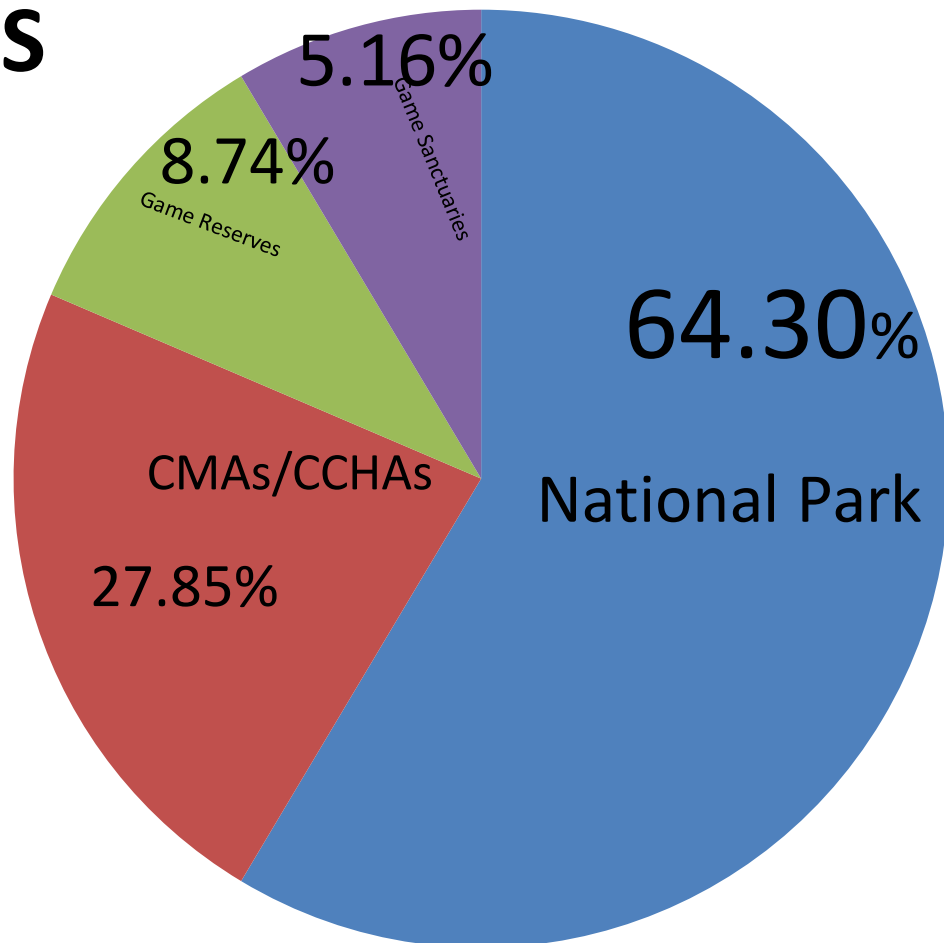
**Percentage ..... 47%**



# PROTECTED AREAS OF GILGIT-BALTISTAN (WILDLIFE PRESERVATION ACT 1975)

S.No	Protected Area	No	Area Sq Km
1.	National Parks	5	21605
2.	Game Sanctuaries	2	583
3.	Game Reserves	6	2001
4.	CMA /CCHA	27	9810
Total:-		40	33999

# AREA UNDER DIFFERENT PROTECTED CATEGORIES

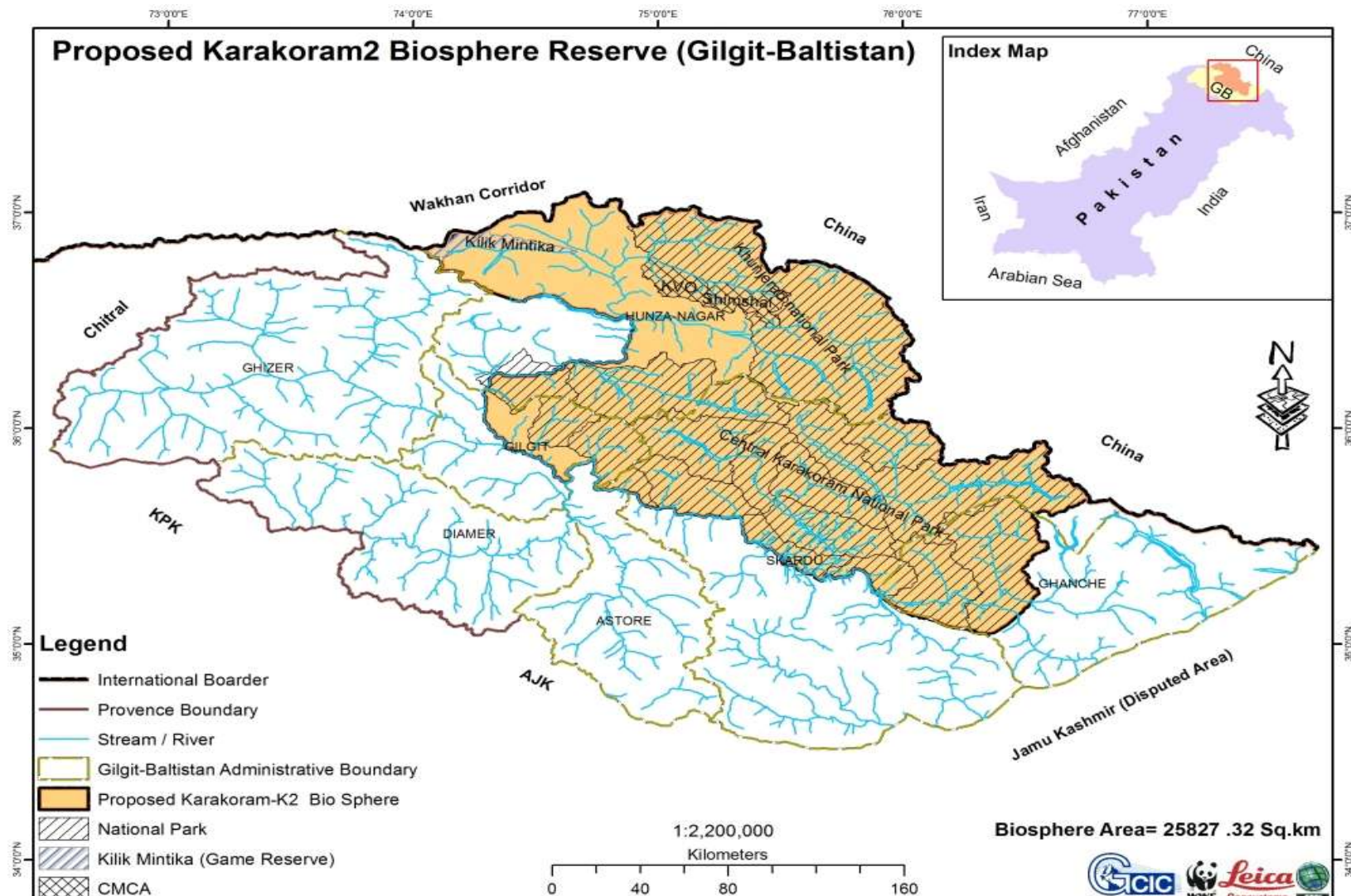


# BIOSPHERE RESERVES

Though there is no Biosphere Reserve in GB at the moment, we have identified 3 potential sites that deserves to be designated as Biosphere Reserves



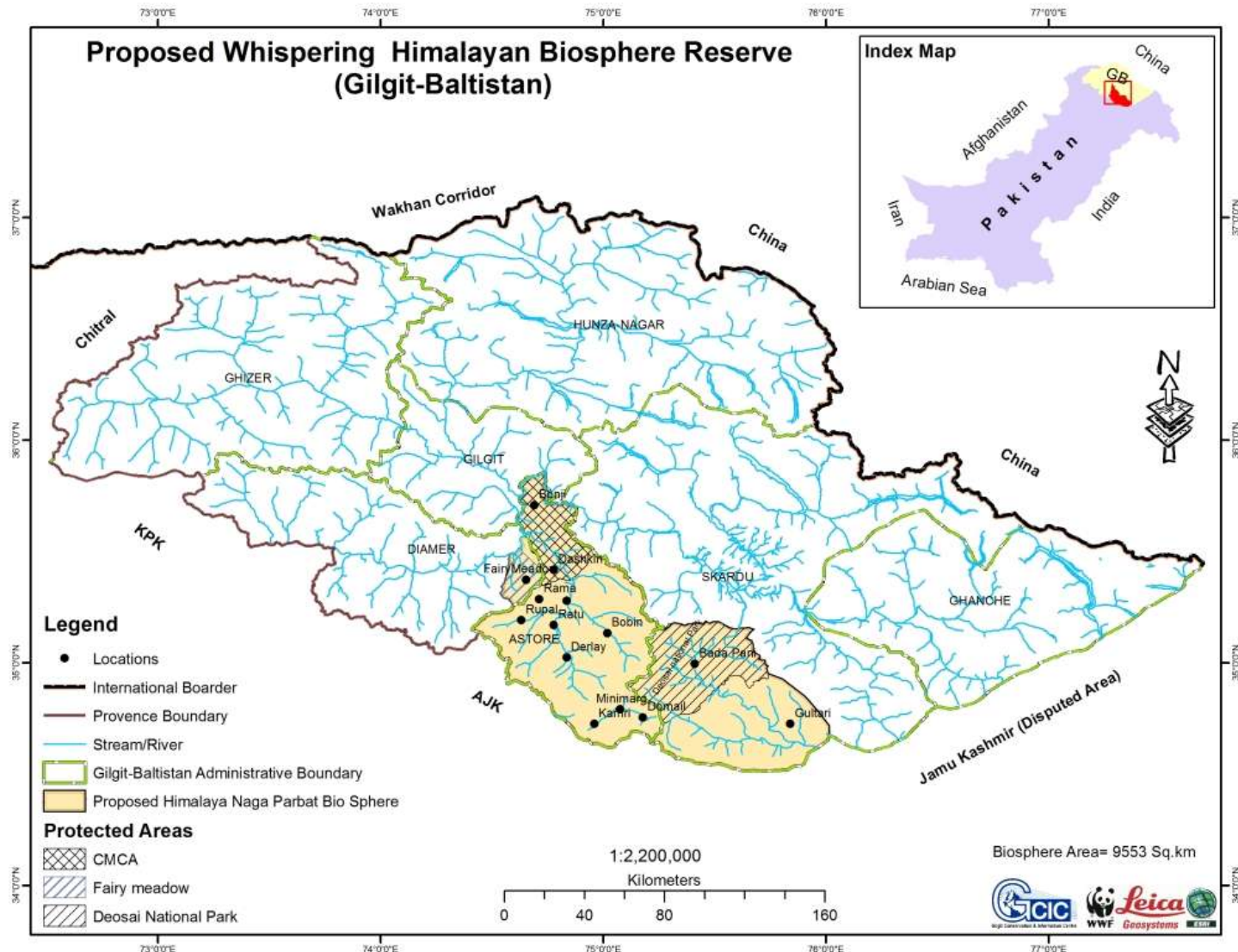
# 1. Karakorum Biosphere Reserve (2 NP: 26000)







# 2. Whispering Himalayan Biosphere (1 NP: 9550)

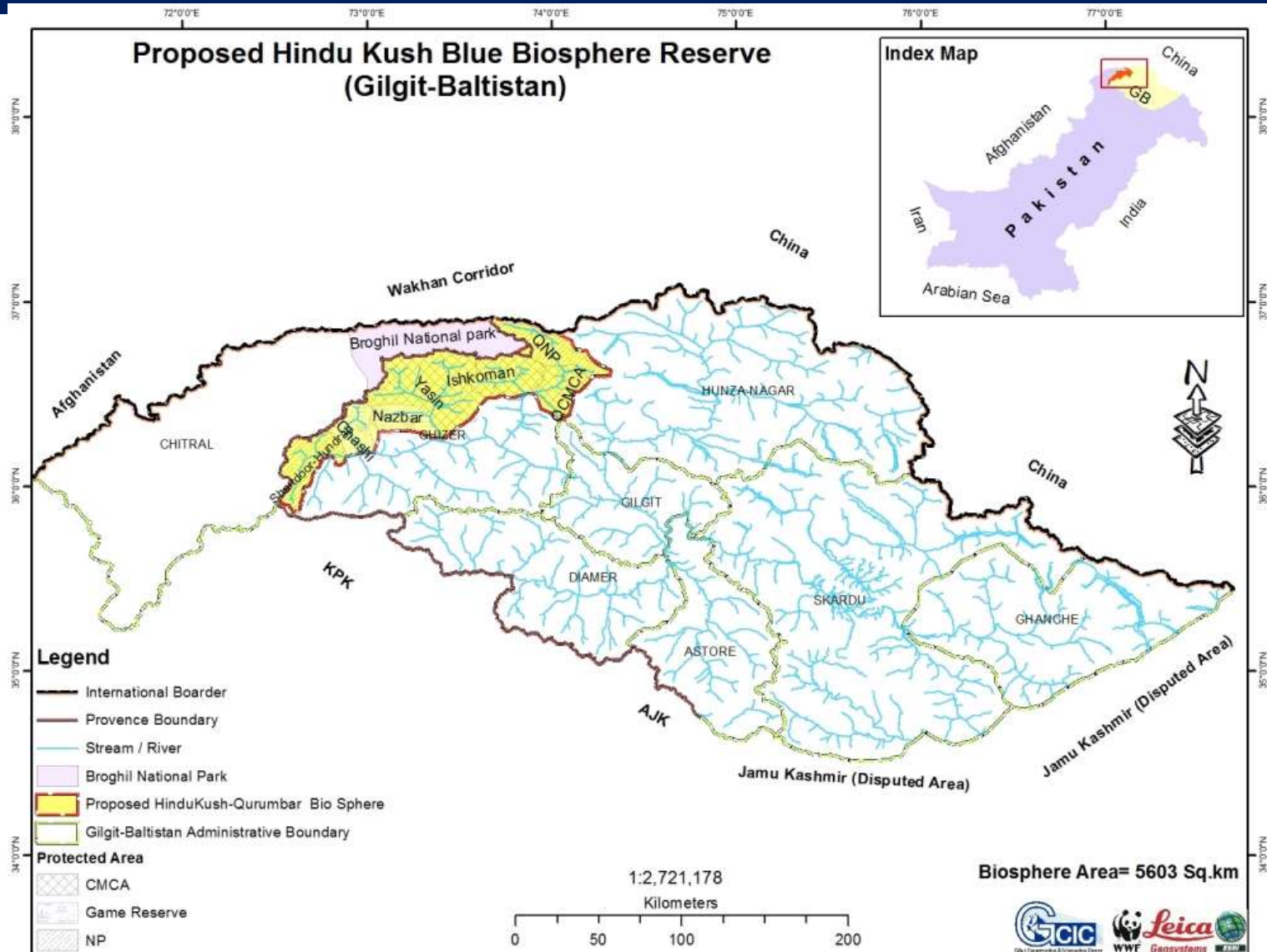






# 3. Hindu kush Biosphere Reserve

## 2 NP: 5600



# CURRENT STATUS

- The GoGB has nominated three sites(as explained above) to MoS&T for needful designation under UNESCO's Man and Biosphere Reserve Programme
- The nomination committee in its meeting on 26<sup>th</sup> August has endorsed all the proposed sites, starting with Karakoram Biosphere Reserve with immediate effect
- Work on the dossier formulation has been started



**MANY THANKS TO EVK2CNR  
FOR THEIR HARD WORK IN GB**

# THANK YOU

