



Ecoregion
conservation

WWF EALP

Guido Trivellini & Sergio Savoia
EALP

23/10/2013

Meeting with WWF F— general
presentation of EALP



High Summit
LECCO 2013



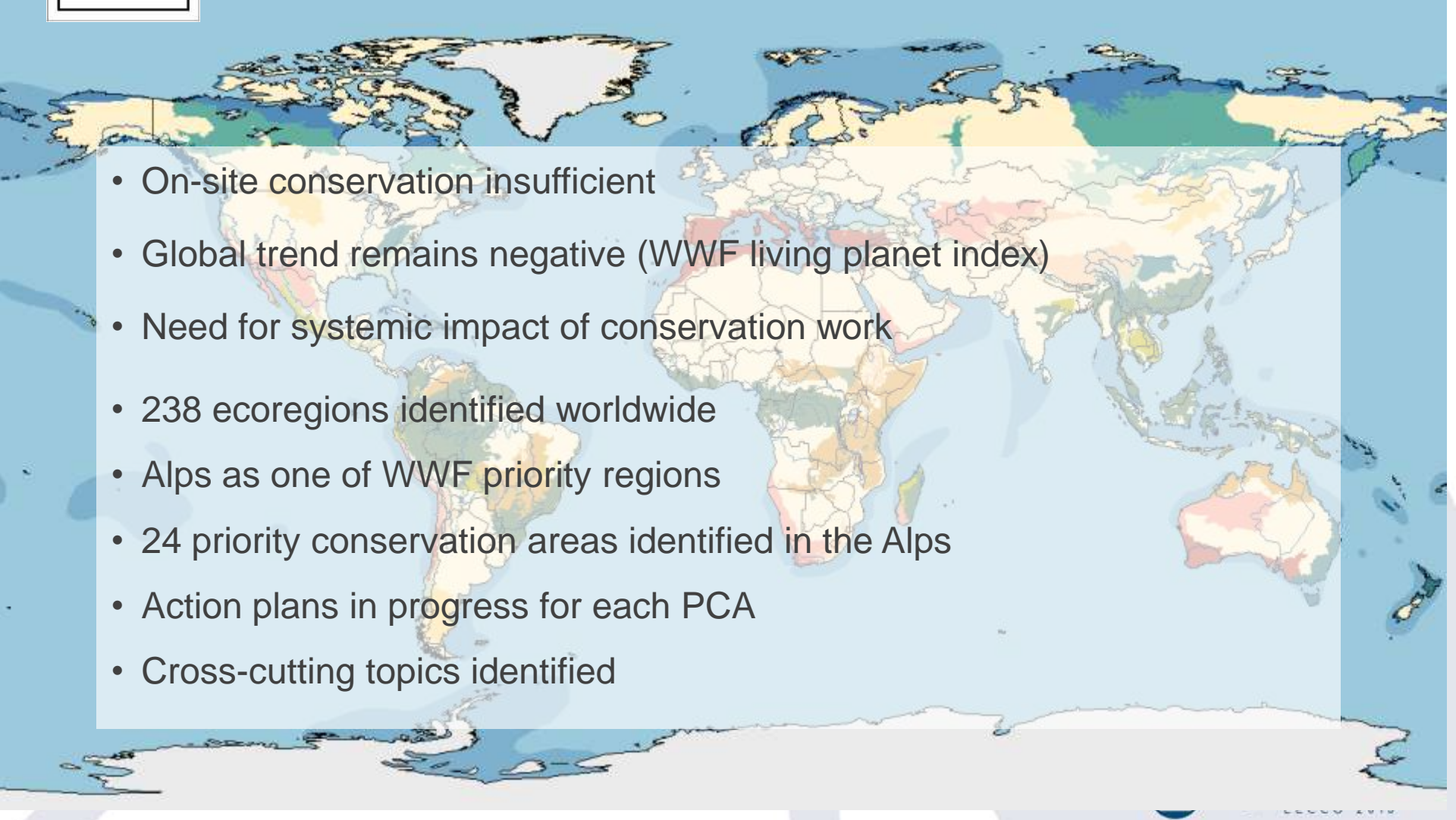
- WWF offices of A, I, F, CH
- Partners (CIPRA, ALPARC, ISCAR)
- Observers in **Alpine Convention** bodies
- Implementing ecoregion conservation





Ecoregions

A new approach to conservation

- 
- A world map with various landmasses colored in different shades of green, yellow, orange, and red, representing different ecoregions. The map is centered on the Atlantic Ocean.
- On-site conservation insufficient
 - Global trend remains negative (WWF living planet index)
 - Need for systemic impact of conservation work
 - 238 ecoregions identified worldwide
 - Alps as one of WWF priority regions
 - 24 priority conservation areas identified in the Alps
 - Action plans in progress for each PCA
 - Cross-cutting topics identified



- Very high plant species richness
- High number of endemics
- Important biodiversity processes
- Extremely anthropized areas
- Significant pristine areas
- Cultural landscape
- Very advanced conservation culture



Threats

The Alps

Highly developed mountain system



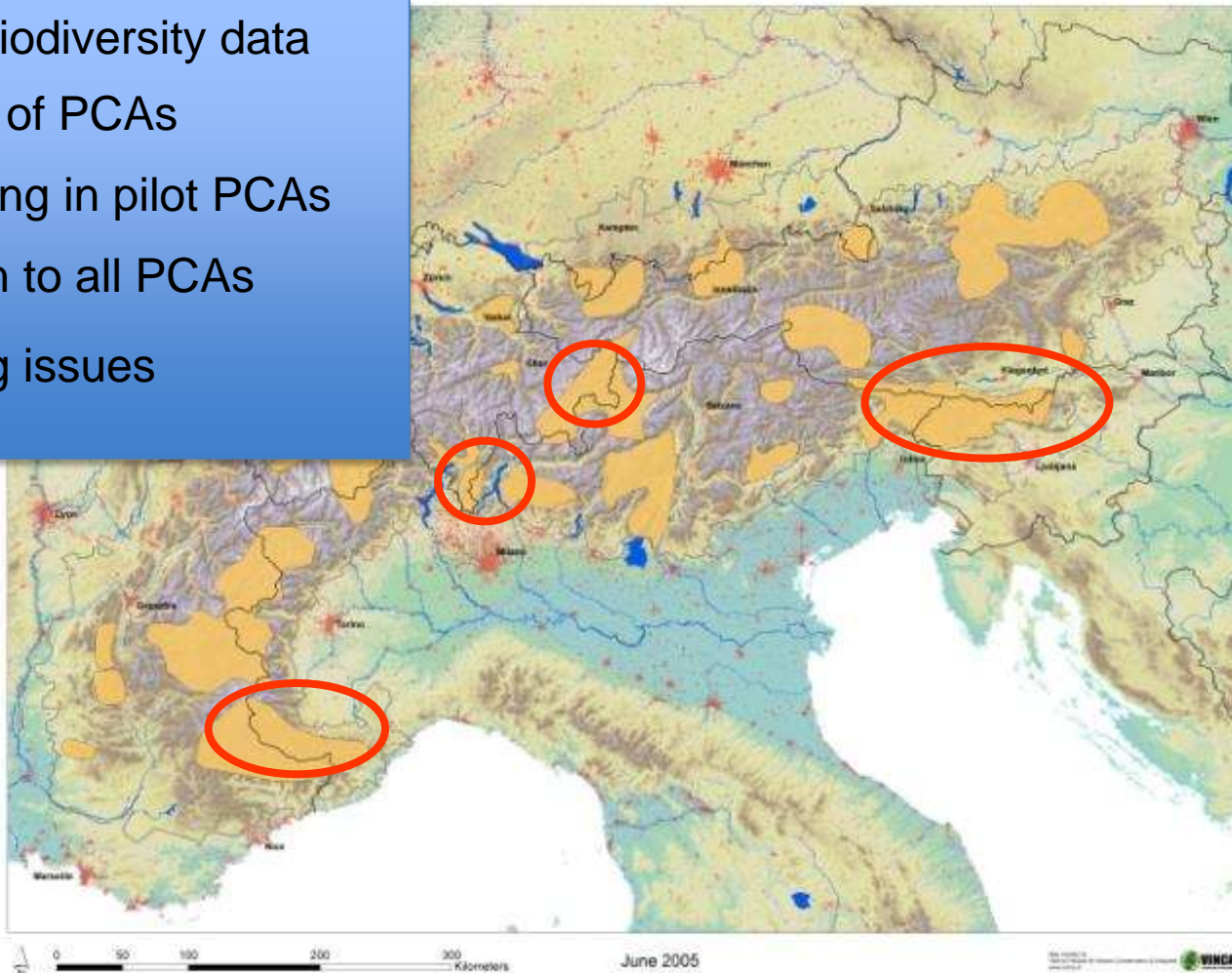
- Urban sprawl → habitat fragmentation
- Traffic infrastructure → pollution, fragmentation
- **Hydropower → degradation of river systems**
- Loss of traditional farming → habitat loss
- Climate change → impact on species, water, safety

The Alps

The conservation plan

Priority Conservation Areas

Analysis of biodiversity data
Identification of PCAs
Action planning in pilot PCAs
Magnification to all PCAs
Cross-cutting issues



Priority Conservation Areas
Alpine Convention
National Boundary

WWF EUROPEAN
ALPINE PROGRAMME

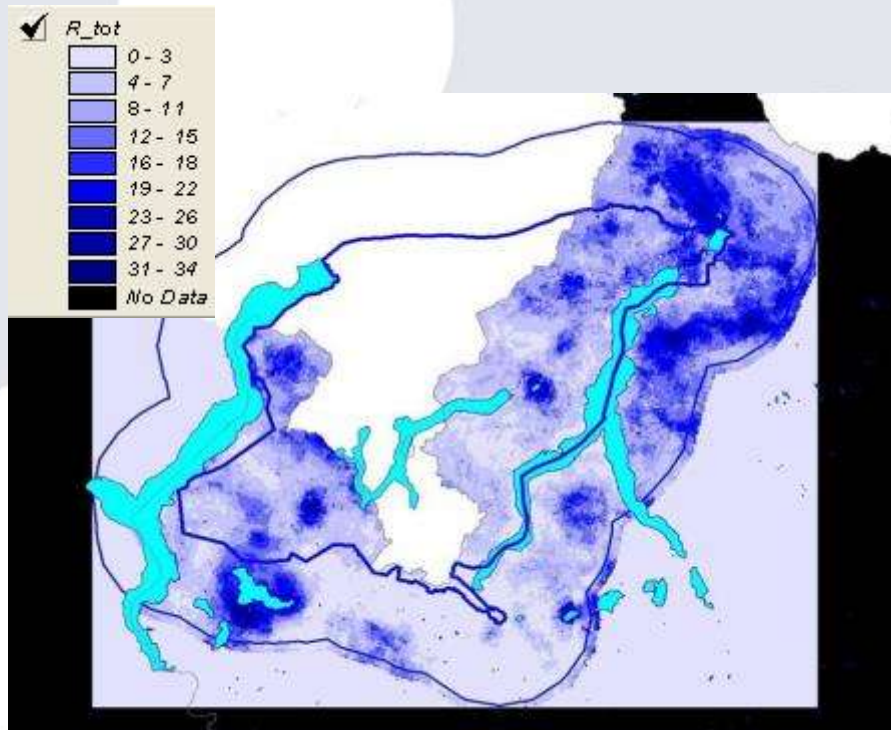


Results

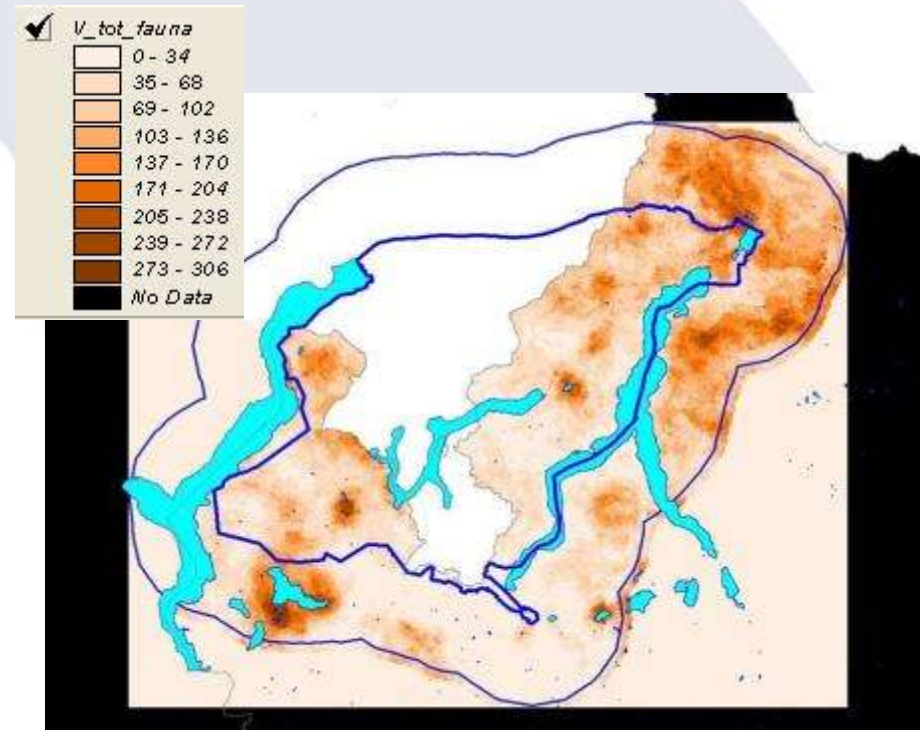
Overlay of 96 one-species habitat-suitability models

Total Wildlife Value (all species)

Species Richness



Conservation value





Targets

The Alps

Highly developed mountain system



- PCAs
- Connectivity
- Freshwater
- Large carnivores





Targets

The Alps

Highly developed mountain system



- PCAs
- Connectivity
- Freshwater
- Large carnivores



And the climate change ?

The Alps

There is a new monitoring station which, in addition to those already present at the global level, study on the ground the variation of plant communities in relation to climate data.

Gloria Orobie is now active in Bergamo Alps.

There is also a new **GLORIA** Target Region in the network and it is in the southern Italian Alps.





The monitoring program of dry meadows



- Re-opening of dry 6 dry meadows
- Hand-made and voluntary work by **financial managers**
- The work implemented by companies as team working exercise
- Companies fund the programme and do communication



A question

1. Resistance

- high-value plantations near harvest to high-priority endangered species with limited available habitat

2. Resilience

- seek to improve forest defenses against direct and indirect effects of rapid environmental changes

3. Response

Promoting resilience is the most commonly suggested adaptive option. Practices that cope with Disturbance (Mills et al. 2001)

Thank you

European Alpine Programme

3rd November 2010

www.panda.org/alps